

# SPEC SHEET + MEASUREMENTS

**SPORT-TEK**

## Sport-Tek® PosiCharge® Strive Hooded Pullover. ST571

### Product photo



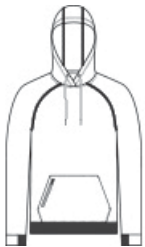
Achieve what you strive for in this elevated, moisture-wicking style that has a soft, natural hand and a slub appearance. PosiCharge technology keeps the colors strong and vibrant.

- 8.9-ounce, 90/10 poly/cotton fleece
- Three-panel hood
- Tear-away removable label
- Raglan sleeves with coverstitching
- Zippered mesh pocket on front pouch pocket
- Half elastic, half self-fabric cuffs and hem for comfort

### CARE INSTRUCTIONS

Machine Wash Cold With Like Colors. Do Not Use Fabric Softener. Do Not Bleach. Tumble Dry Low. Remove Promptly. Cool Iron If Needed. Do Not Dry Clean.

### Sketches



front



back

# SPEC SHEET + MEASUREMENTS

**SPORT-TEK**

Sport-Tek® PosiCharge® Strive Hooded Pullover. ST571

## PRODUCT MEASUREMENTS

	XS	S	M	L	XL	2XL	3XL	4XL
Body Length at Back	26 1/2	27 1/2	28 1/2	29 1/2	30 1/2	31 1/2	32	32 1/2
Chest	18	19 1/2	21	22 1/2	24	25 1/2	27 1/2	29 1/2
Sleeve Length from Center Back	4	4	4 1/4	4 1/2	4 3/4	5	5	5 1/4

**Body Length at Back:** Measured from high point shoulder to finished hem at back.

**Chest:** Measured across the chest one inch below armhole when laid flat.

**Sleeve Length from Center Back:** Measure from Center Back neck to shoulder point to sleeve hem.

## SIZE CHARTS

	XS	S	M	L	XL	2XL	3XL	4XL
Chest	32-34	35-37	38-40	41-43	44-46	47-49	50-53	54-57

# SPEC SHEET + MEASUREMENTS

**SPORT-TEK**

Sport-Tek® PosiCharge® Strive Hooded Pullover. ST571

## HOW TO MEASURE

---



### CHEST

Measure under the arm and around the fullest part of the chest with arms down, keeping tape horizontal.

## COLORS

---



Black  
PMS BLACK  
C



Deep Red  
PMS 201C



Graphite  
PMS COOL  
GRAY 11C



True Navy  
PMS 533C



True Royal  
PMS 7687C